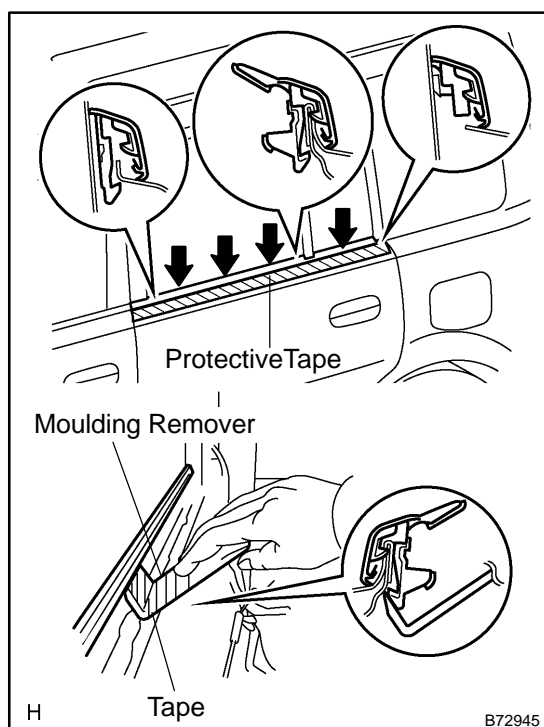


## REAR DOOR GLASS WEATHERSTRIP ASSY OUTER LH REPLACEMENT

760ZQ-02

### HINT:

- The installation procedures are removal procedures in reverse order.
  - Use the same procedures for the RH side and LH side.
1. REMOVE DOOR PULL HANDLE (See Page 75-21)
  2. REMOVE POWER WINDOW REGULATOR SWITCH ASSY REAR (See Page 75-21)
  3. REMOVE REAR DOOR TRIM BOARD SUB-ASSY LH (See Page 75-21)
  4. REMOVE REAR DOOR INSIDE HANDLE SUB-ASSY LH (See Page 75-21)
  5. REMOVE REAR DOOR SERVICE HOLE COVER LH (See Page 75-21)



### 6. REMOVE REAR DOOR GLASS WEATHERSTRIP ASSY OUTER LH

- (a) Put protective tape under the weatherstrip.
- (b) Using a moulding remover, pry out the weatherstrip as shown in the illustration.

### HINT:

Tape the remover tip before use.