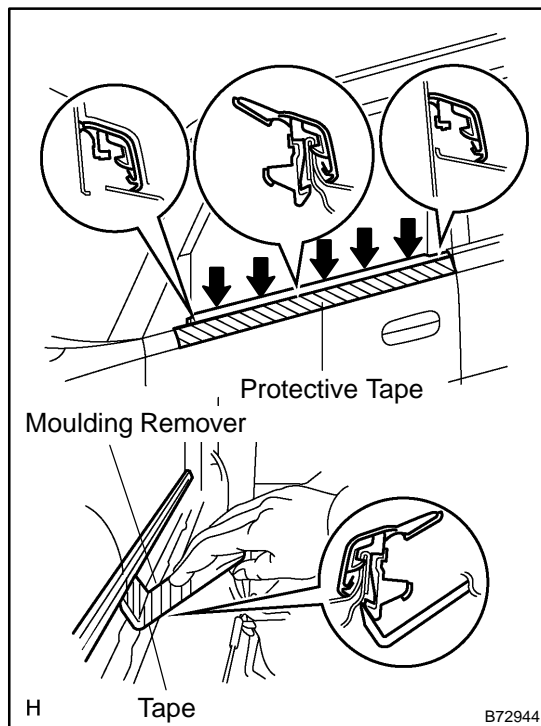


FRONT DOOR GLASS WEATHERSTRIP ASSY OUTER LH REPLACEMENT

7602P-02

HINT:

- The installation procedures are the removal procedures in reverse order.
 - Use the same procedures for the RH side and LH side.
1. REMOVE FRONT DOOR LOWER FRAME BRACKET GARNISH LH (See page 75-7)
 2. REMOVE DOOR PULL HANDLE (See page 75-7)
 3. REMOVE POWER WINDOW REGULATOR MASTER SWITCH ASSY (See page 75-7)
 4. REMOVE FRONT DOOR TRIM BOARD SUB-ASSY LH (See page 75-7)
 5. REMOVE FRONT DOOR INSIDE HANDLE SUB-ASSY LH (See page 75-7)
 6. REMOVE FRONT DOOR SERVICE HOLE COVER LH (See page 75-7)
 7. REMOVE OUTER REAR VIEW MIRROR ASSY LH (See page 75-7)



8. REMOVE FRONT DOOR GLASS WEATHERSTRIP ASSY OUTER LH

- (a) Put protective tape under the weatherstrip.
- (b) Using a moulding remover, pry out the weatherstrip as shown in the illustration.

HINT:

Tape the remover tip before use.