

REPLACEMENT

HINT:

The installation procedures are the removal procedures in reverse order. However, only installation procedures requiring additional information are included.

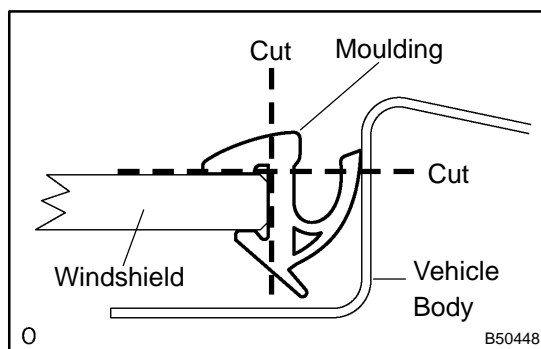
1. REMOVE ROOF HEADLINING ASSY (See page 76-15)

- Remove the front door opening trim LH and RH.
- Remove the front pillar garnish LH and RH.
- Remove the LH and RH visors.
- Remove the assist grip.
- Remove the visor holder RH and LH.
- Remove the map lamp lens cover.
- Remove the map lamp.
- Remove the roof headlining partially so that the windshield glass can be removed.

2. REMOVE INNER REAR VIEW MIRROR ASSY (See page 70-40)

3. REMOVE COWL TOP VENTILATOR LOUVER (See page 66-6)

- Remove the wiper arm cover RH and LH.
- Remove the front wiper arm LH and RH.
- Remove the hood to cowl top seal.
- Remove the cowl top ventilator louver LH and RH.



4. REMOVE WINDSHIELD MOULDING OUTSIDE

- Using a knife, cut off the moulding, as shown in the illustration.

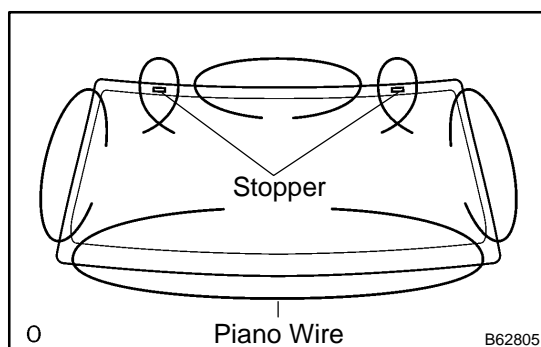
NOTICE:

Do not damage the body with the knife.

- Remove the remaining moulding.

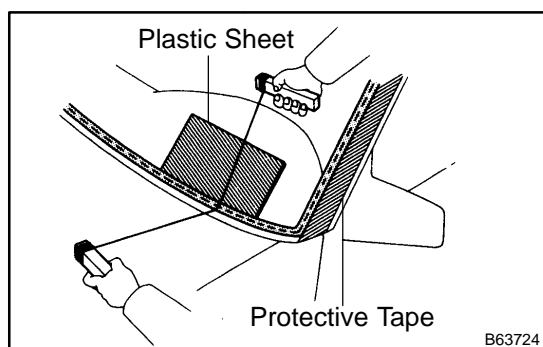
HINT:

Make a partial cut in the moulding. Then, pull and remove it by hand.



5. REMOVE WINDSHIELD GLASS

- From the interior, insert piano wire between the vehicle body and glass, as shown in the illustration.
- Tie objects that can serve as handles (for example, wooden blocks) to all wire ends.

**HINT:**

Apply protective tape to the outer surface to the vehicle to prevent its surface from being scratched.

NOTICE:

- When separating the glass from the vehicle, take care not to damage the vehicle's paint the interior and exterior ornaments.
- To prevent instrument panel's safety pad from being scratched when removing the glass, place a plastic sheet between the piano wire and safety pad.

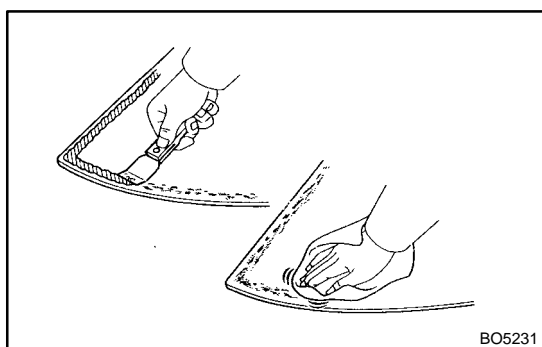
(c) Cut the glass by pulling the piano wires around the glass.

(d) Disengage the stoppers.

(e) Using a suction cup, remove the glass.

NOTICE:

Leave as much adhesive on the vehicle body as possible when removing the glass.

**6. CLEAN WINDSHIELD GLASS**

(a) Using a scraper, remove the damaged stoppers, dam and adhesive sticking to the glass.

(b) Clean the outer circumference of the glass with white gasoline.

NOTICE:

- Do not touch the glass surface after cleaning it.
- Be careful not to damage the glass.
- Even if using new glass, clean the glass with white gasoline.

7. INSTALL WINDSHIELD GLASS STOPPER NO.2

(a) Coat the installation part of the stopper with Primer G.

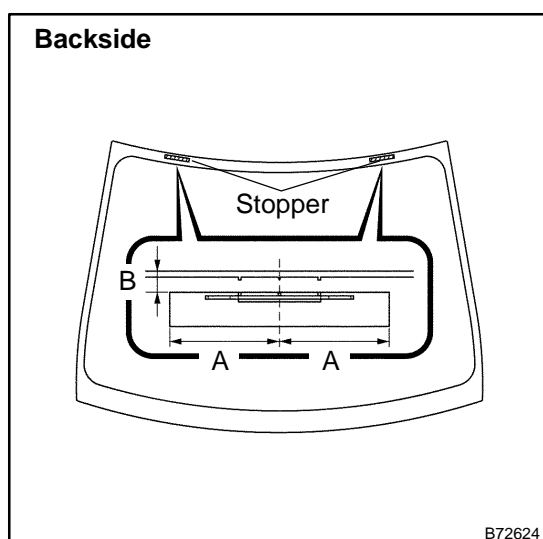
NOTICE:

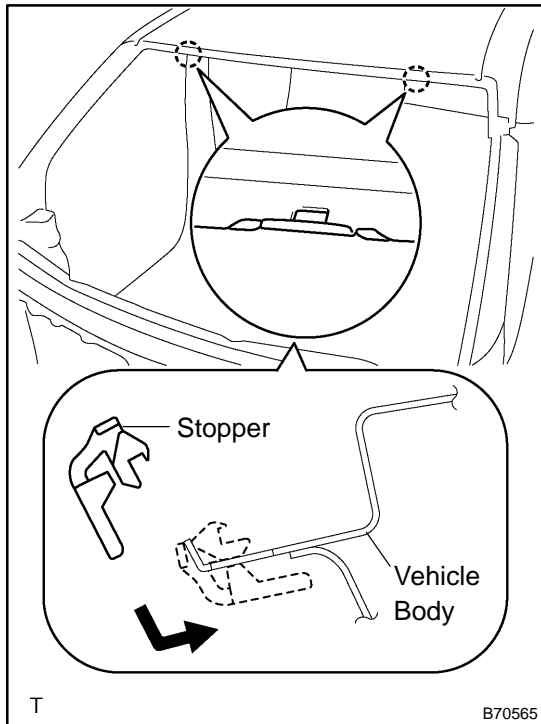
- Allow the primer coating to dry for 3 minutes or more.
- Throw away any leftover Primer G.
- Do not apply too much primer.

(b) Install 2 new windshield glass stoppers onto the glass, as shown in the illustration.

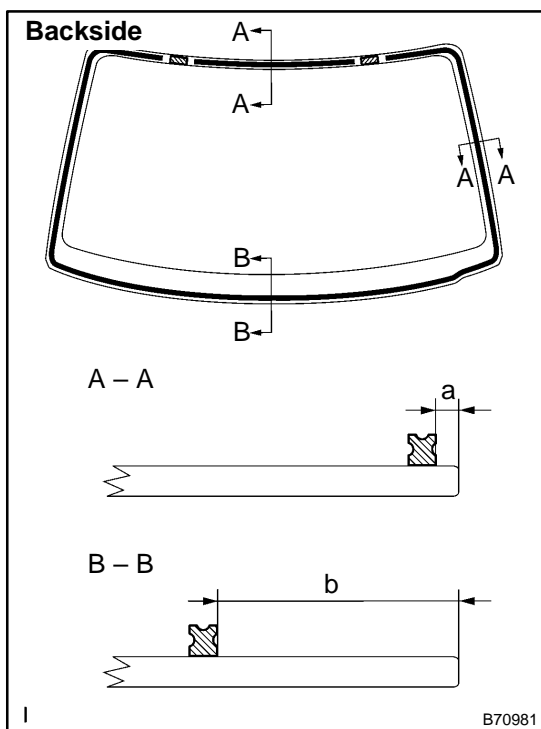
Specification:

Area	Measurement
A	40.0 mm (1.575 in.)
B	9.0 mm (0.354 in.)



**8. INSTALL WINDSHIELD GLASS STOPPER NO.1**

- (a) Install 2 new stoppers to the vehicle body, as shown in the illustration.

**9. INSTALL WINDOW GLASS ADHESIVE DAM**

- (a) Coat the installation part of the window glass adhesive dam with Primer G.

NOTICE:

- Allow the primer coating to dry for 3 minutes or more.
- Throw away any leftover Primer G.
- Do not apply too much primer.

- (b) Install a new dam, applying double-sided tape all the way around the glass except where the dam is installed, as shown in the illustration.

Specification:

Area	Measurement
a	7.0 mm (0.276 in.)
b	23.5 mm (0.925 in.)

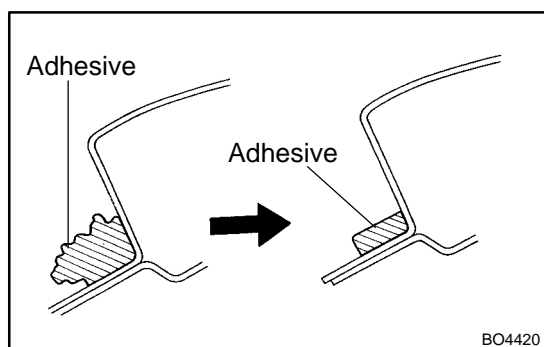
10. INSTALL WINDSHIELD MOULDING OUTSIDE

- (a) Using a brush or sponge, coat the edge of the glass and the contact surface with Primer G.

NOTICE:

- Allow the primer coating to dry for 3 minutes or more.
- Do not coat the adhesive with Primer G.
- Throw away any leftover Primer G.

- (b) Install the windshield moulding.



11. INSTALL WINDSHIELD GLASS

- (a) Clean and shape the contact surface of the vehicle body.
- (1) Using a knife, cut away any excess or unneeded adhesive on the contact surface.

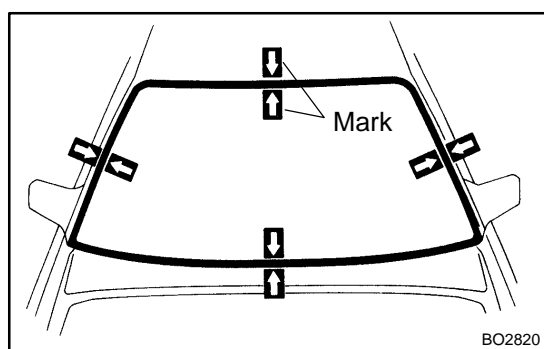
HINT:

Leave as much adhesive on the vehicle body as possible.

- (2) Clean the contact surface of the vehicle body with a piece of shop rag saturated with cleaner.

HINT:

Even if all the adhesive is removed, continue cleaning the vehicle body.



- (b) Position the glass.
- (1) Using a suction cup, place the glass in the correct position.
 - (2) Check that the whole contact surface of the glass rim is perfectly even.
 - (3) Place reference marks between the glass and vehicle body.

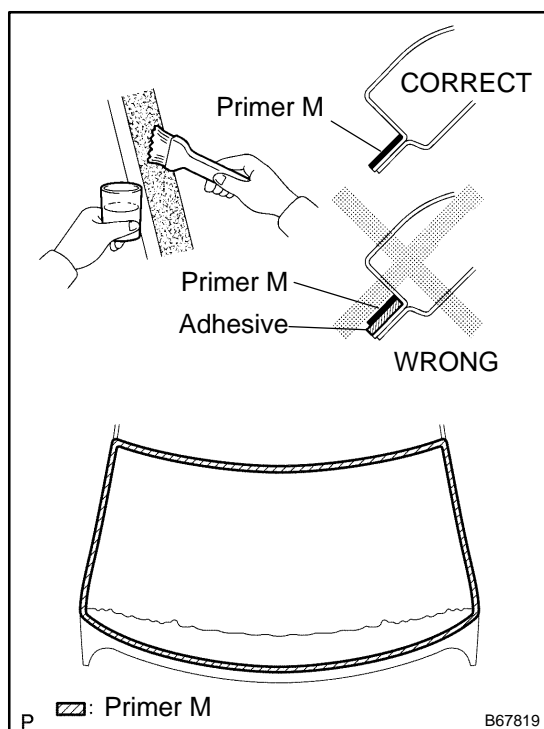
NOTICE:

Check that the stoppers are attached to the vehicle body correctly.

HINT:

When reusing the glass, check and correct the reference mark positions.

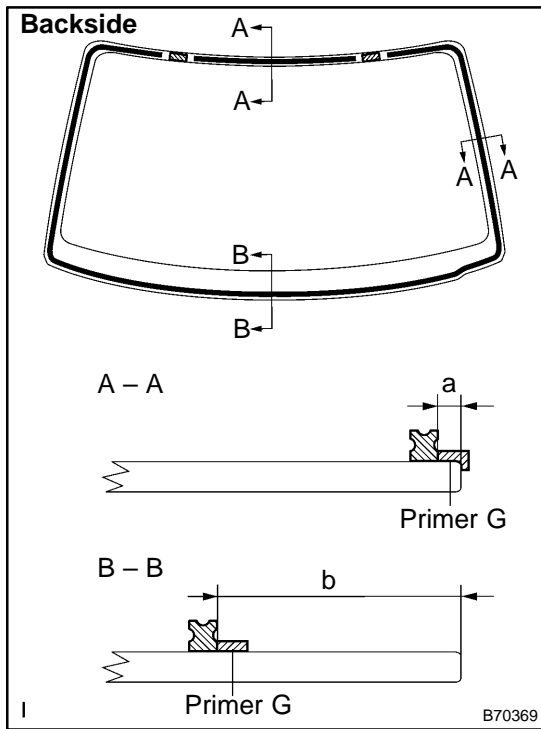
- (4) Remove the glass.



- (c) Using a brush, coat the contact surface of the vehicle body on the vehicle side with Primer M.

NOTICE:

- Allow the primer coating to dry for 3 minutes or more.
- Do not coat the adhesive with Primer M.
- Throw away any leftover Primer M.



(d) Using a brush or sponge, coat the edge of the glass and the contact surface with Primer G, as shown in the illustration.

Specification:

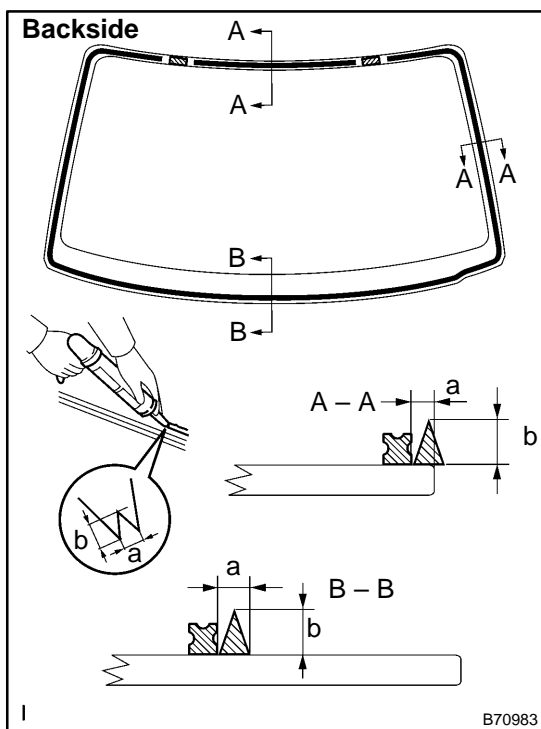
Area	Measurement
a	7.0 mm (0.276 in.)
b	23.5 mm (0.925 in.)

HINT:

If Primer G is accidentally applied to another part of the vehicle, wipe off the primer with a clean shop rag before it dries.

NOTICE:

- Allow the primer coating to dry for 3 minutes or more.
- Do not coat the adhesive with Primer G.
- Throw away any leftover Primer G.



(e) Apply adhesive.

Adhesive: Part No. 08850-0801 or equivalent

- (1) Cut off the tip of the cartridge nozzle, as shown in the illustration.

HINT:

After cutting off the tip, use all adhesive within the time described in the table below.

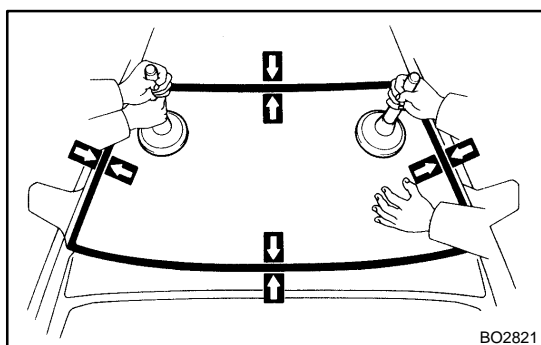
Usage Timeframe:

Temperature	Usage Timeframe
35°C (95°F)	15 minutes
20°C (68°F)	1 hour 40 minutes
5°C (41°F)	8 hours

- (2) Load the sealer gun with the cartridge.
- (3) Coat the glass with adhesive, as shown in the illustration.

Specification:

Area	Measurement
a	8.0 mm (0.315 in.)
b	12.0 mm (0.472 in.)



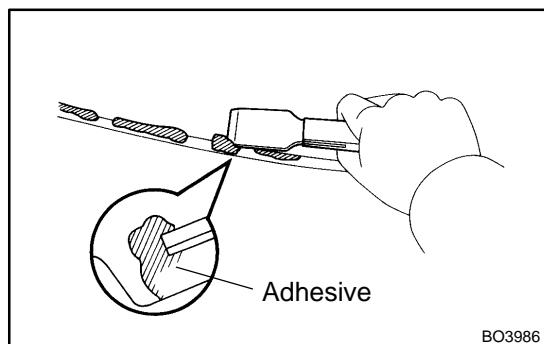
(f) Install the glass.

- (1) Using a suction cup, position the glass so that the reference marks are aligned. Press it in gently along the rim.

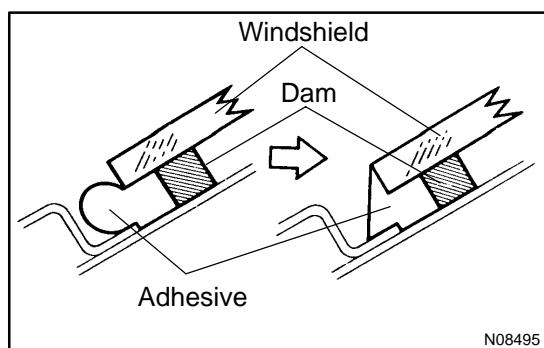
NOTICE:

- Allow the primer coating to dry for 3 minutes or more.
- Check that the stoppers are attached to the vehicle body correctly.
- Check the clearance between the vehicle body and glass.

- (2) Lightly press the front surface of the glass to ensure a close fit.



- (3) Using a scraper, remove any excess or protruding adhesive.

**HINT:**

Apply adhesive onto the glass rim.

NOTICE:

Take care not to drive the vehicle for the time described in the table below.

Minimum time:

Temperature	Minimum time prior to driving vehicle
35°C (95°F)	1 hour 30 minutes
20°C (68°F)	5 hours
5°C (41°F)	24 hours

12. INSPECT FOR LEAKS AND REPAIR

- (a) Conduct a leak test after the adhesive has completely hardened.
 (b) Seal any leaks with auto glass sealer.