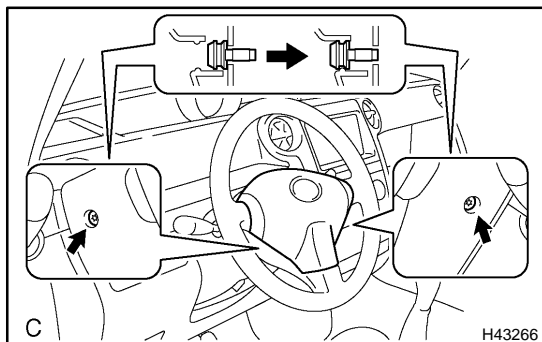


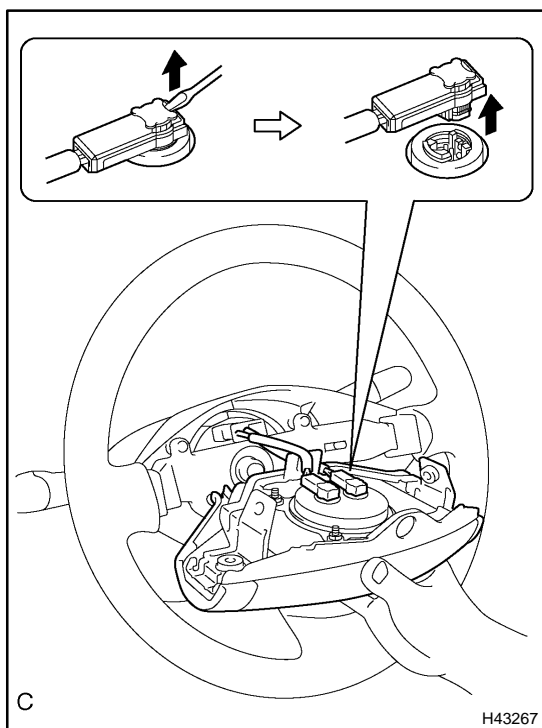
REPLACEMENT

1. **PRECAUTION** (See page 60-1)
2. **DISCONNECT BATTERY NEGATIVE TERMINAL** (See page 60-1)



3. REMOVE HORN BUTTON ASSY

- (a) Place the front wheels facing straight ahead.
- (b) Using a torx socket wrench (T30), loosen the 2 torx screws until the groove along the screw circumference catches on the screw case.

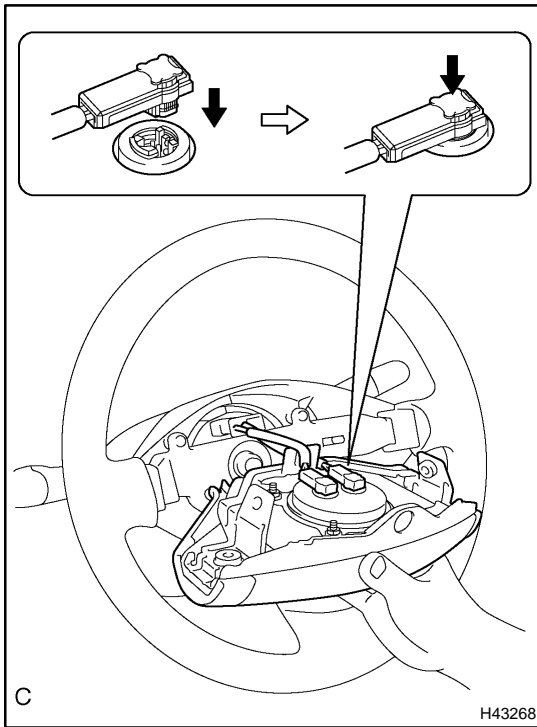


- (c) Pull out the horn button assy from the steering wheel assy and support the horn button assy with one hand as shown in the illustration.

NOTICE:

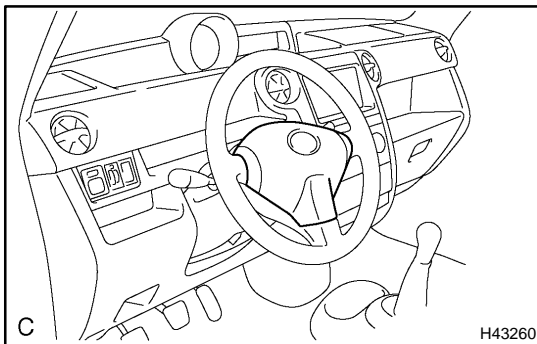
When removing the horn button assy, do not pull the airbag wire harness.

- (d) Using a screwdriver, disconnect the horn button assy connectors.
- (e) Disconnect the horn connector.
- (f) Remove the horn button assy.



4. INSTALL HORN BUTTON ASSY

- (a) Support the horn button assy with one hand as shown in the illustration.
- (b) Connect the horn button assy connectors.
- (c) Connect the horn connector.
- (d) Confirm that the circumference groove of the torx screw fits in the screw case, and place the horn button assy onto the steering wheel assy.
- (e) Using a torx socket wrench (T 30), install the 2 screws.
Torque: 8.8 N·m (90 kgf·cm, 78 in.-lbf)



5. INSPECT HORN BUTTON ASSY

- (a) Perform a visual check which includes the following items with the horn button assy installed in the vehicle:
Cuts, minute cracks or marked discoloration on the horn button assy top surface and in the grooved portion.

6. INSPECT SRS WARNING LIGHT (See page [05-451](#))