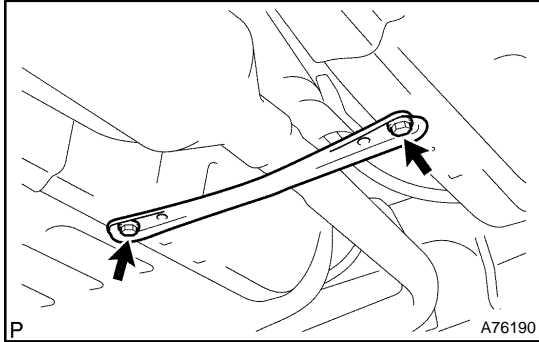


Removal & Installation and Disassembly & Reassembly

1. REMOVE SHIFT LEVER KNOB SUB-ASSY (M/T TRANSAXLE)
2. REMOVE CONSOLE BOX ASSY REAR (See page 33-4)

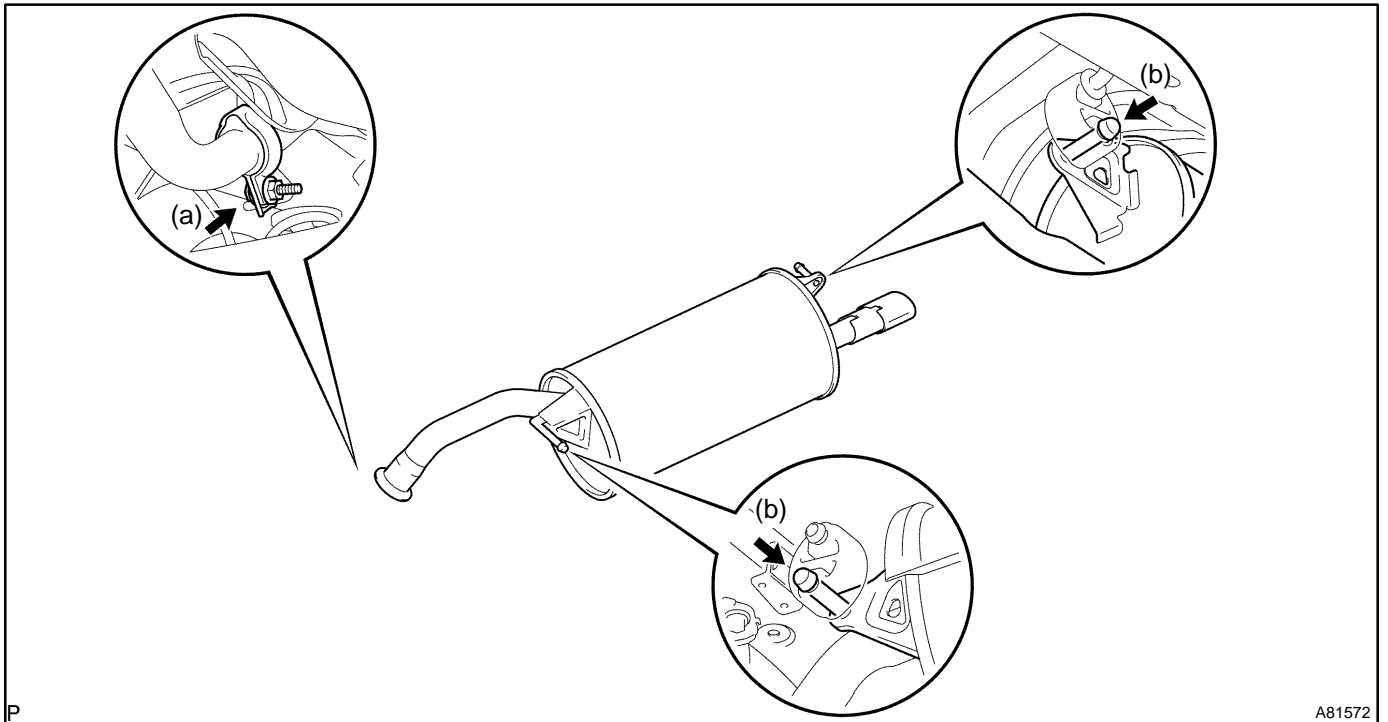


3. REMOVE FLOOR PANEL BRACE FRONT

- (a) Remove the 2 bolts and floor panel brace front.

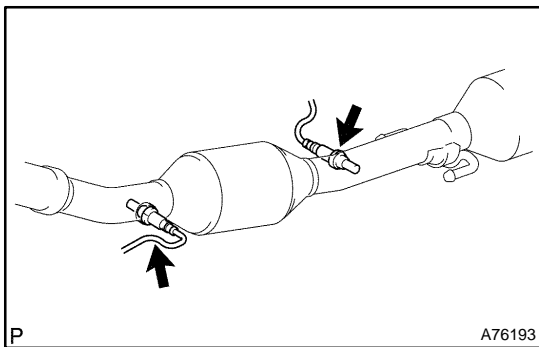
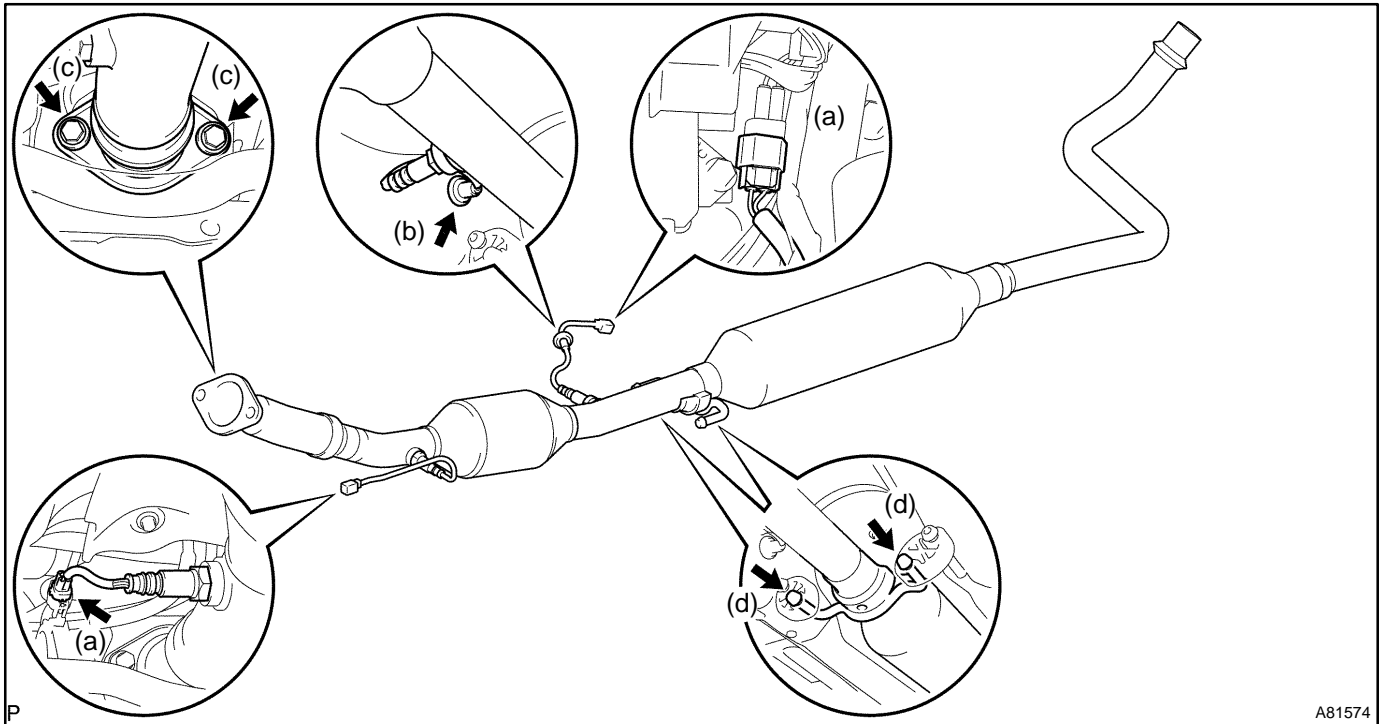
4. REMOVE EXHAUST PIPE ASSY TAIL

- (a) Remove the bolt and clamp.
- (b) Disconnect the 2 exhaust pipe supports, and remove the exhaust pipe tail and gasket.

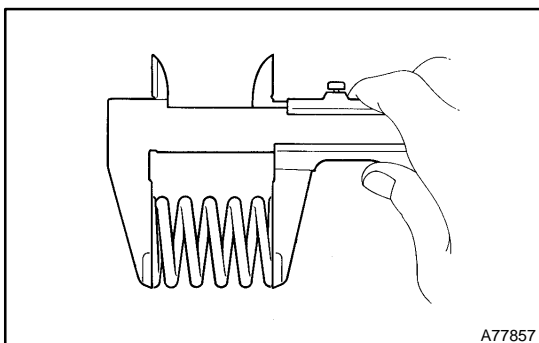


5. REMOVE EXHAUST PIPE ASSY FRONT

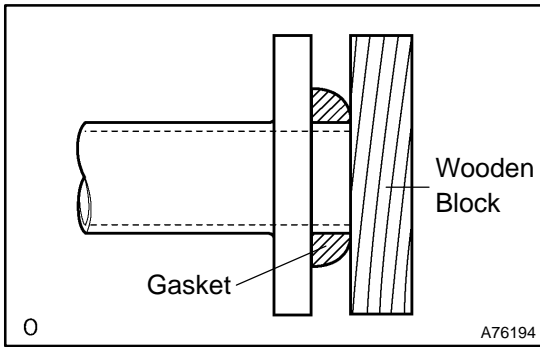
- (a) Disconnect the 2 heated oxygen sensor connectors.
- (b) Remove the grommet.
- (c) Remove the 2 bolts and 2 compression springs.
- (d) Disconnect the 2 exhaust pipe supports, and remove the exhaust pipe front.
- (e) Remove the gasket from the exhaust manifold.



- (f) Remove the 2 heated oxygen sensors.

**6. INSTALL EXHAUST PIPE ASSY FRONT**

- (a) Install the 2 heated oxygen sensors.
Torque: 44 N·m (449 kgf·cm, 32 ft·lbf)
- (b) Using vernier calipers, measure the free length of the compression spring.
Minimum length: 40.5 mm (1.594 in.)
If the minimum length is not as specified, replace the compression spring.

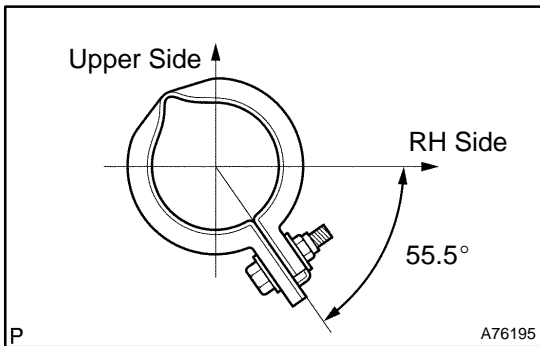


- (c) Using a plastic-faced hammer and a wooden block, tap in a new gasket until its surface is flush with the exhaust manifold.

NOTICE:

- Tap in the gasket in the correct direction.
- Do not reuse the removed gasket.
- Be sure not to push in the gasket when installing the exhaust pipe.

- (d) Connect the 2 exhaust pipe supports, and install the exhaust pipe front.
- (e) Install the 2 compression springs and 2 bolts.
Torque: 43 N·m (438 kgf·cm, 32 ft·lbf)
- (f) Connect the 2 heated oxygen sensor connectors.
- (g) Install the grommet.



7. INSTALL EXHAUST PIPE ASSY TAIL

- (a) Install a new gasket to the exhaust pipe front.
- (b) Connect the 2 exhaust pipe supports, and install the exhaust pipe tail.
- (c) Install the clamp with the bolt as shown in the illustration.
Torque: 32 N·m (326 kgf·cm, 24 ft·lbf)

- 8. CHECK FOR EXHAUST GAS LEAKS**
- 9. INSTALL FLOOR PANEL BRACE FRONT**
- 10. INSTALL CONSOLE BOX ASSY REAR**
- 11. INSTALL SHIFT LEVER KNOB SUB-ASSY (M/T TRANSAXLE)**