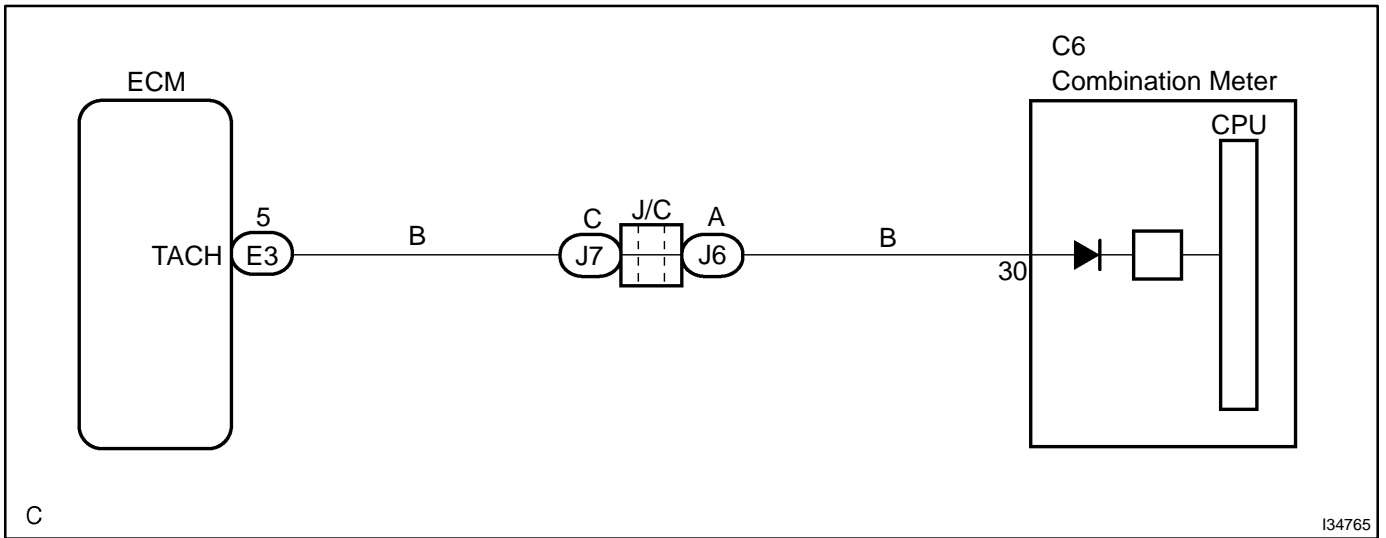


# MALFUNCTION IN TACHOMETER

## WIRING DIAGRAM



## INSPECTION PROCEDURE

HINT:

Start the inspection from step 1 when using the hand-held tester, and start from step 2 when not using the hand-held tester.

### 1 READ VALUE OF HAND-HELD TESTER

- (a) Connect the hand-held tester to the DLC3.
- (b) Turn the ignition switch to the ON position and press the hand-held tester main switch on.
- (c) Select the item below in the DATA LIST, and read the displays on the hand-held tester.

**ALL:**

Hand-held Tester Display	Measurement Item/Range (Display)	Normal Condition	Diagnostic Note
ENGINE SPD(*1)	Engine speed/ Min.: 0 rpm, Max.: 16383 rpm	Idling: 650 to 750 rpm	-

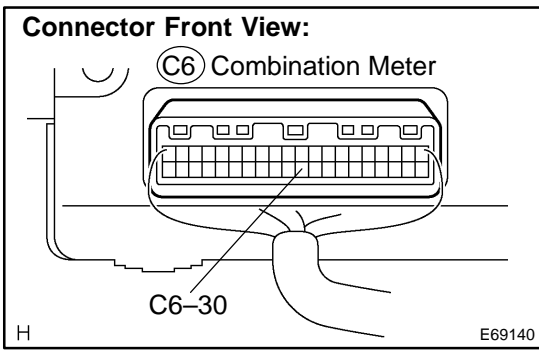
\*1: ECM Data

NG

**GO TO FLOW CHART (SFI SYSTEM)**  
 (See page 05-1)

OK

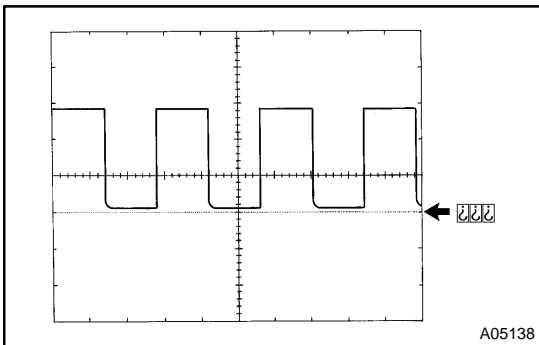
**2 INSPECT COMBINATION METER ASSY**



(a) Measure the voltage according to the value(s) in the table below.

**Standard:**

Tester connection	Condition	Specified condition
C6-30 - Body ground	Engine running	Pulse generation (*1)



\*1: Reference: Using oscilloscope:

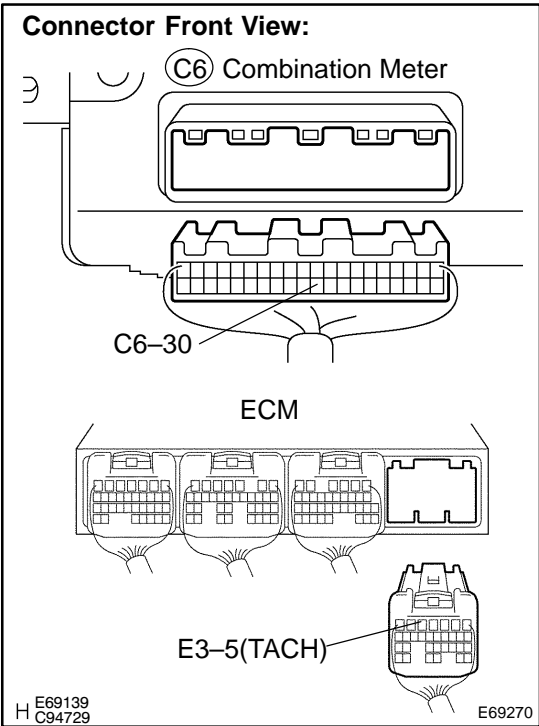
Item	Contents
Tool setting	5 V/ DIV, 10 ms/ DV
Vehicle condition	Engine idle speed

**NG** → **Go to step 3**

**OK**

**REPLACE COMBINATION METER ASSY (See page 71-28)**

**3 CHECK HARNESS AND CONNECTOR(ECM - COMBINATION METER ASSY)**



- (a) Disconnect the combination meter connector and E3 connector of ECM.
- (b) Measure the resistance according to the value(s) in the table below.

**Standard:**

Tester connection	Condition	Specified condition
C6-30 - E3-5 (TACH)	Always	Below 1 Ω
C6-30 - Body ground	Always	10 kΩ or higher

**NG** REPAIR OR REPLACE HARNESS OR CONNECTOR (See page 01-30)

**OK**

**REPLACE ECM (See page 10-17)**